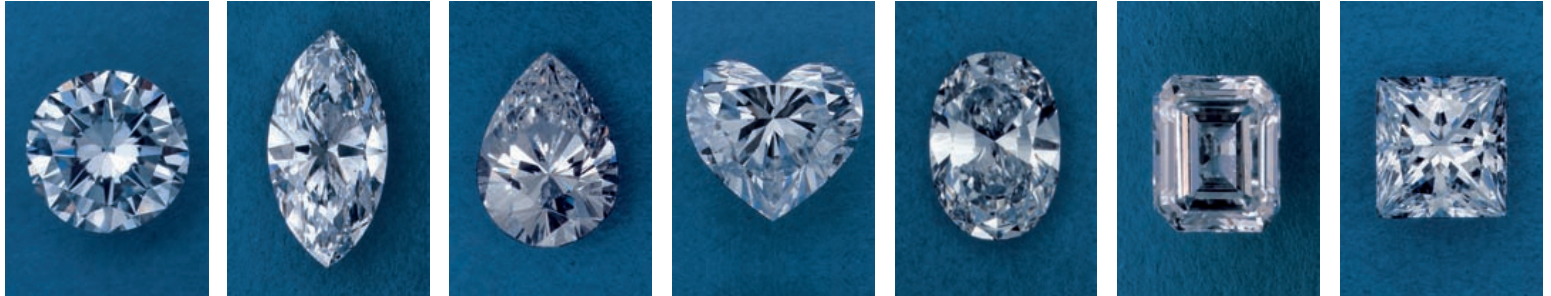




INTERNATIONAL GEMOLOGICAL INSTITUTE

With the Courtesy of IGI

DIAMOND CRITERIA



Round Brilliant

Marquise

Pear

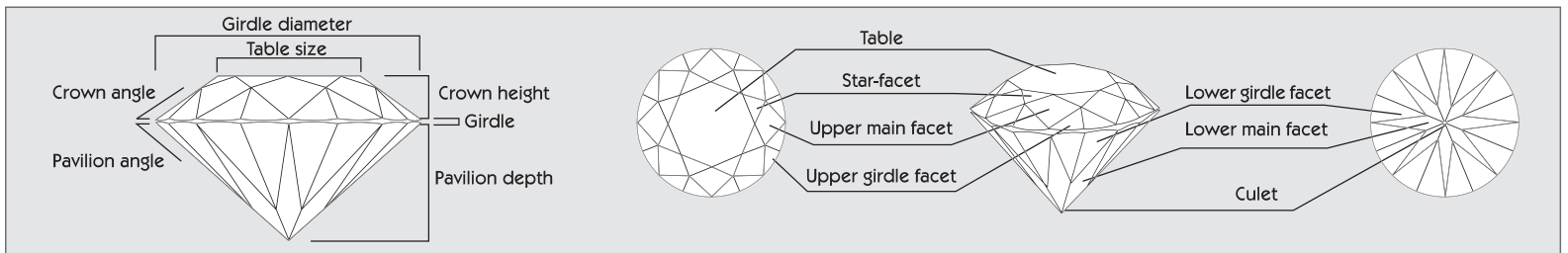
Heart

Oval

Emerald

Princess

CUT



CARAT

Ct	0,05	0,10	0,20	0,25	0,30	0,40	0,50	0,70	0,90	1,00	1,25	1,50	1,75	2,00	2,50	3,00
\varnothing_m	2,5	3,0	3,8	4,1	4,5	4,8	5,2	5,8	6,3	6,5	6,9	7,4	7,8	8,2	8,8	9,4
h_m	1,5	1,8	2,3	2,5	2,7	3,0	3,1	3,5	3,8	3,9	4,3	4,5	4,7	4,9	5,3	5,6

CLARITY

I.F.	V.V.S. 1	V.V.S. 2	V.S. 1	V.S. 2	S.I. 1	S.I. 2	P.1-I.1	P.2-I.2	P.3-I.3
Internally Flawless Free from internal blemishes visible under 10x magnification (small external details tolerated)	Very Very Slightly included Inclusions and/or external blemishes very difficult to locate under 10x magnification.	Very Slightly included Inclusions and external blemishes difficult to locate under 10x magnification.	Slightly included Inclusions and external blemishes easy to locate under 10x magnification.	Imperfect Inclusions and external blemishes very easy to locate under 10x magnification.	Imperfect Inclusions and external blemishes easy to locate with naked eye.	Imperfect Heavy inclusions located with naked eye.			

COLOR

D (0+) - F (1+) Colorless	G (1) - J (4) Near Colorless	K (5) - M (7) Slightly Tinted	N (8) - R (12) Very Light Yellow	S (13) - Z (20) Light Yellow - Yellow